

Total Valuation:	\$145,263,930
Total Effective Millage:	22.12 (ag/res)
Inside	4.5 (Op.) 2 (PI)
Outside (voted)	41.95
Emergency	3.50
Bond	22 mills
SDIT	.75%

Appropriations:

General Fund	\$8,547,000
Total—All Funds	\$33,491,000

Expenditures Per Pupil ('14) \$8,297

Revenue by Source:

Local	53%
State	43%
Federal	4%

Enrollment: 1180

Number of Employees:

Certified	57
Classified	33
Administrators	6

**COMPENSATION AND TERMS OF
EMPLOYMENT**

The board intends to offer the successful candidate a multi-year contract. Salary and fringe benefits are negotiable and will be commensurate with the candidate's education, qualifications, and years of experience.

BOARD OF EDUCATION

Scott Hawthorn, President	6 years
Brian Moore, Vice Pres.	2 years
Joseph Solch	11 years
Lori Sebastian	newly elected
Todd Wright	newly elected

SUPERINTENDENT

Virginia Potter	2 years
-----------------	---------

MISSION

The mission of Bethel Local Schools is to educate with excellence, inspiring each student to become a responsible, contributing citizen in local and world communities.

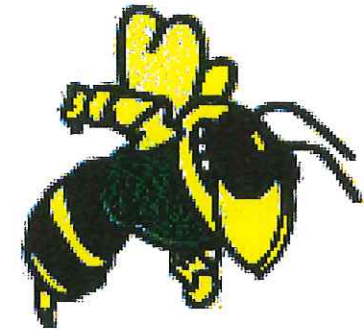
APPLICATION DEADLINE

March 11, 2016

**THE
BETHEL LOCAL
SCHOOL DISTRICT**

is seeking qualified candidates
for the position of

TREASURER



Home of the Bees

Tentative Timeline

Announce Vacancy	February 17, 2016
Application Deadline	March 11, 2016
Action to Employ	May 9, 2016
Employment to begin	July 1, 2016 (with possible transition time between May 16 th and June 30 th , depending on availability)

To learn more about the Bethel Local Schools, visit our web site at:

www.bethel.k12.oh.us

THE POSITION

The Bethel Local School District is seeking qualified applicants for the position of Treasurer of Schools. The board is looking for a dedicated, dynamic, and innovative financial leader who possesses strong collaborative skills and who will fiscally support the programs that make a school district successful.

THE DISTRICT

The Bethel Local Schools K-12 campus is located in Miami County on State Route 201 approximately five miles north of Huber Heights, Ohio.

The district, which serves more than eleven hundred students and has received an "Excellent" rating from the Ohio Department of Education, recently earning 30 of the 31 state indicators on the state report card.

The district offers a core of comprehensive academic programs to its students, including college preparatory courses, high quality Advanced Placement Class options, College Credit Plus opportunities, as well as programs for talented/gifted, special education, and creative arts students. Bethel High School students interested in career technical programs attend the Miami Valley Career Technology Center, located approximately fifteen miles from the school.

THE BETHEL SCHOOLS COMMUNITY

Located in the southeast portion of Miami County in southwestern Ohio, the Bethel Local School District consists of several small communities and agricultural properties

located just a few minutes from the I-70, I-75 interchange, making metropolitan areas such as Dayton, Cincinnati, and Columbus just a short drive away. The district exemplifies an educational community focused on academic excellence and a quality educational experience for all students.

LEADERSHIP CRITERIA

Bethel's next treasurer must demonstrate the following:

- Leadership capabilities and strong financial understanding, well-versed in school funding, grants, and school operations;
- The necessary skills and ability to work effectively with the board and superintendent to serve as a contributing member of the management team;
- Proficiency in managing the aspects of human resources that include payroll, employee insurance, and other fringe benefit packages;
- The ability to see and understand the shared vision of the school district and take steps to support long-range planning and student services;
- A strong sense of integrity, high standards of honesty, ethics and personal conduct, and a sense of humor;
- Skills necessary to prepare and adapt forecasts and projections and to regularly update the board as to any financial impacts.

THE APPLICATION PROCESS

Applications by qualified candidates are encouraged. Please submit:

- A letter emphasizing qualifications and reasons for interest.
- An application, which accompanies this brochure.
- An up-to-date resume.
- University placement file or transcripts.
- A copy of current Ohio Treasurer's License or evidence that one is attainable.
- Three letters of reference.

Send all applications and materials to:

Tom Dunn
Superintendent
Miami County Educational Service Center
2000 West Stanfield Road
Troy, Ohio 45373
(937)339-5100
(937)339-3256 (fax)
tom.dunn@miami.k12.oh.us

The Bethel Local School District does not discriminate on the basis of race, color, age, national origin, sex (including the sexual orientation and transgender identity), disability, age, religion, ancestry, military status, genetic information (collectively, "Protected Classes") marital status, or any other legally protected category, in its programs and activities, including employment opportunities.